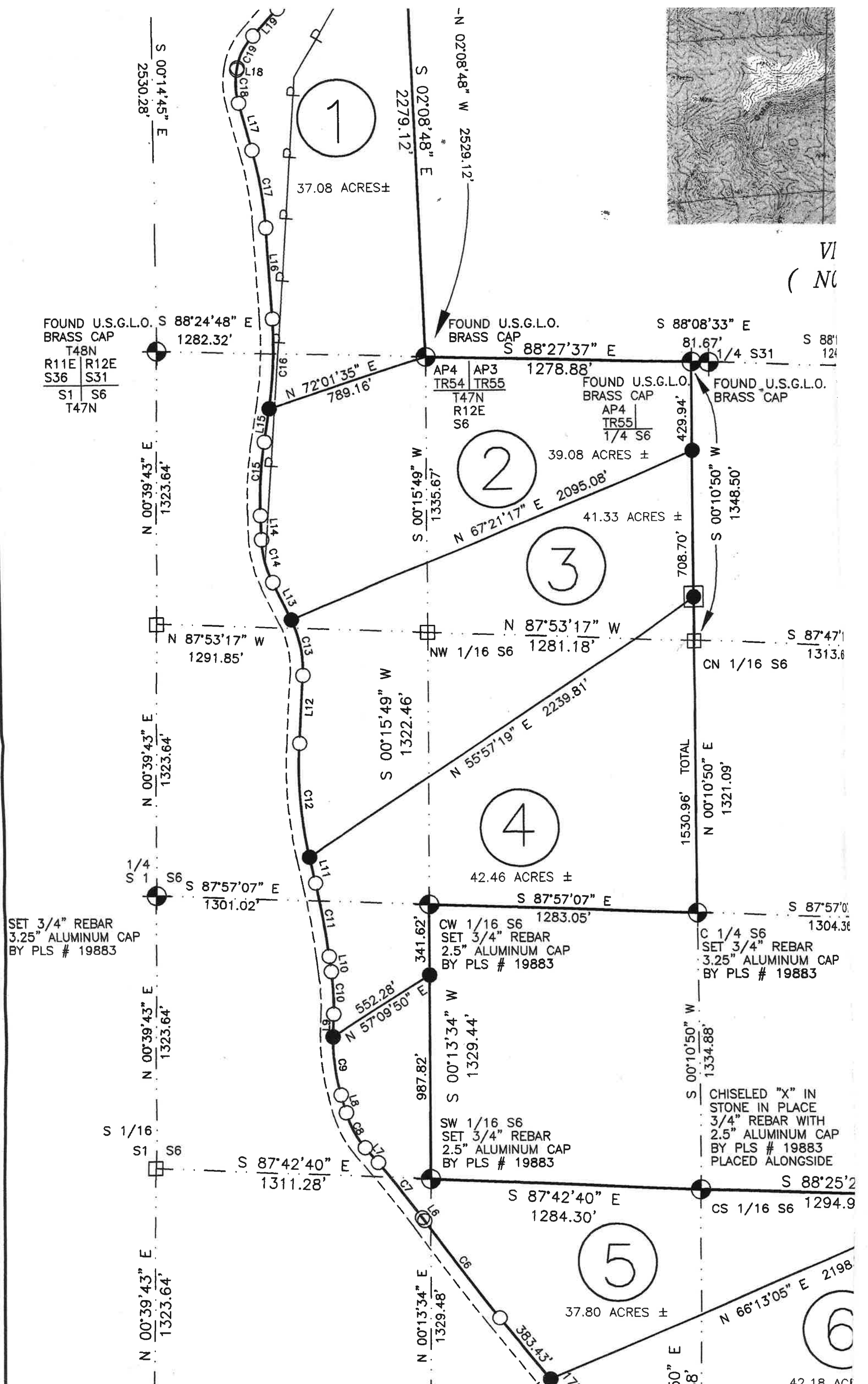


VI
(NC



SET 3/4" REBAR
3.25" ALUMINUM CAP
BY PLS # 19883

CW 1/16 S6 1283.05'
SET 3/4" REBAR
2.5" ALUMINUM CAP
BY PLS # 19883

CHISELED "X" IN
STONE IN PLACE
3/4" REBAR WITH
2.5" ALUMINUM CAP
BY PLS # 19883
PLACED ALONGSIDE

42.18 AC